

210 W 23rd St

210 W 23rd St, Ottawa, KS 66067

PRESTIGE
REAL ESTATE

Presented By:
Prestige Real Estate



210 W 23rd St

210 W 23rd St, Ottawa, KS 66067

Property Details

TIF DISTRICT

Price: \$1,000,000

- This property is located near I-35 and 59 Hwy.
- The property is located in a TIF DISTRICT AND OPPORTUNITY ZONE!

View the full listing here: <https://www.loopnet.com/Listing/210-W-23rd-St-Ottawa-KS/17350051/>

Price:	\$1,000,000
Property Type:	Land
Property Sub-type:	Commercial
Proposed Use:	Retail
Sale Type:	Investment
Total Lot Size:	4.80 AC
No. Lots:	1
Zoning Description:	C3

210 W 23rd St

210 W 23rd St, Ottawa, KS 66067

Location



210 W 23rd St

210 W 23rd St, Ottawa, KS 66067

Property Photos



Building Photo



Aerial

210 W 23rd St

210 W 23rd St, Ottawa, KS 66067

Property Photos



Aerial



Aerial

210 W 23rd St

210 W 23rd St, Ottawa, KS 66067

Property Photos



Aerial



Aerial

210 W 23rd St

210 W 23rd St, Ottawa, KS 66067

Property Photos



Aerial



Aerial

210 W 23rd St

210 W 23rd St, Ottawa, KS 66067

Property Photos



Aerial



Aerial

210 W 23rd St

210 W 23rd St, Ottawa, KS 66067

Property Photos



Aerial



Aerial

210 W 23rd St

210 W 23rd St, Ottawa, KS 66067

Property Photos



Aerial



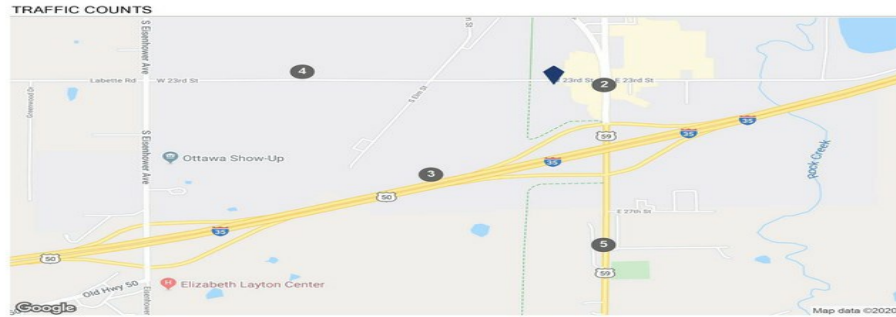
210 W 23rd St & 59 Hwy

210 W 23rd St, Ottawa, KS 66067

Property Photos

Subject Property

226 W 23rd St



COUNTS BY STREETS

	Collection Street	Cross Street - Direction	Traffic Volume	Count Year	Dist from Subject
1	S Princeton St	W 23rd St - N	8,298	2015	0.11 mi
2	S Princeton St	S Princeton Cir Dr - N	8,100	2018	0.11 mi
3	I- 35	Old Hwy 50 Bus - W	13,992	2018	0.46 mi
4	W 23rd St	E 23rd St - E	3,419	2018	0.55 mi
5	US Hwy 59	Kingman Rd - S	6,146	2018	0.64 mi

Subject Property

226 W 23rd St



Population	1 Mile	3 Miles	5 Miles	10 Miles	10 Min. Drive
Population	1,573	10,892	14,163	18,245	13,617
5 Yr Growth	0.1%	0.8%	0.9%	1.0%	0.7%
Median Age	36	35	36	38	36
5 Yr Forecast	36	36	37	38	38
White / Black / Hispanic	94% / 1% / 4%	92% / 2% / 5%	93% / 2% / 6%	94% / 2% / 5%	93% / 2% / 6%
5 Yr Forecast	92% / 2% / 4%	92% / 2% / 6%	92% / 2% / 6%	93% / 2% / 5%	93% / 2% / 6%
Employment	1,538	5,544	8,755	9,563	6,895
Buying Power	\$28.7M	\$189.2M	\$248.8M	\$347.9M	\$251.9M
5 Yr Growth	0.2%	0.6%	0.7%	1.0%	0.6%
College Graduates	29.6%	22.4%	20.7%	20.4%	27.6%
Household					
Households	690	4,299	5,571	7,147	5,358
5 Yr Growth	0.1%	0.9%	0.9%	1.0%	0.7%
Median Household Income	\$41,632	\$44,012	\$44,657	\$48,676	\$47,007
5 Yr Forecast	\$41,677	\$43,899	\$44,547	\$48,686	\$46,987
Average Household Income	\$62,514	\$57,629	\$57,089	\$60,966	\$60,632
5 Yr Forecast	\$63,845	\$58,111	\$57,576	\$61,562	\$61,601
% High Income (>\$75k)	25%	27%	27%	29%	28%
Housing					
Median Home Value	\$167,283	\$112,511	\$124,354	\$125,245	\$118,330
Median Year Built	1986	1962	1962	1965	1961
Owner / Renter Occupied	48% / 52%	60% / 40%	61% / 39%	66% / 34%	61% / 39%

Traffic Count CoStar 1-20

Demographics CoStar 1-20

210 W 23rd St

210 W 23rd St, Ottawa, KS 66067

Property Photos

Income & Spending Demographics									
226 W 23rd St									
	1 Mile		3 Miles		5 Miles		10 Min. Drive		
2019 Households by HH Income	688	4,298	984	5,571	1,049	5,358			
<\$25,000	207	30.09%	984	22.89%	1,287	23.10%	1,049	19.58%	
\$25,000 - \$50,000	260	37.79%	1,410	32.81%	1,794	32.20%	1,803	33.65%	
\$50,000 - \$75,000	49	7.12%	728	16.94%	998	17.91%	1,028	19.19%	
\$75,000 - \$100,000	21	3.05%	635	14.77%	842	15.11%	691	12.90%	
\$100,000 - \$125,000	38	5.52%	187	4.35%	241	4.33%	355	6.63%	
\$125,000 - \$150,000	59	8.58%	163	3.79%	175	3.14%	186	3.47%	
\$150,000 - \$200,000	28	4.07%	134	3.12%	175	3.14%	161	3.00%	
\$200,000+	26	3.78%	57	1.33%	59	1.06%	85	1.59%	
2019 Avg Household Income	\$62,514		\$57,629		\$57,089		\$60,632		
2019 Med Household Income	\$41,632		\$44,012		\$44,657		\$47,007		
	1 Mile		3 Miles		5 Miles		10 Min. Drive		
Total Specified Consumer Spending	\$15.8M	\$98.0M	\$126.2M	\$121.1M					
Total Apparel	\$921.4K	5.83%	\$7.3M	5.81%	\$7.3M	5.82%	\$7.0M	5.77%	
Women's Apparel	\$357.9K	2.26%	\$2.1M	2.19%	\$2.8M	2.18%	\$2.6M	2.15%	
Men's Apparel	\$177.1K	1.12%	\$1.1M	1.17%	\$1.5M	1.18%	\$1.4M	1.17%	
Girl's Apparel	\$84.8K	0.54%	\$512.3K	0.52%	\$656.2K	0.52%	\$628.5K	0.52%	
Boy's Apparel	\$54.1K	0.34%	\$336.3K	0.34%	\$434.0K	0.34%	\$418.8K	0.35%	
Infant Apparel	\$46.1K	0.29%	\$289.7K	0.31%	\$382.2K	0.30%	\$360.4K	0.30%	
Footwear	\$201.4K	1.27%	\$1.3M	1.28%	\$1.6M	1.29%	\$1.6M	1.29%	
Total Entertainment & Hobbies	\$1.3M	8.40%	\$8.0M	8.21%	\$10.4M	8.23%	\$18.5M	16.11%	
Entertainment	\$261.1K	1.65%	\$1.4M	1.43%	\$1.8M	1.42%	\$1.7M	1.42%	
Audio & Visual Equipment/Service	\$576.2K	3.65%	\$3.6M	3.66%	\$4.6M	3.66%	\$4.5M	3.73%	
Reading Materials	\$70.6K	0.45%	\$402.3K	0.41%	\$514.0K	0.41%	\$469.0K	0.40%	
Pets, Toys, & Hobbies	\$419.9K	2.66%	\$2.7M	2.71%	\$3.4M	2.72%	\$3.3M	2.71%	
Personal Items	\$1.2M	7.89%	\$7.6M	7.73%	\$9.6M	7.60%	\$9.5M	7.84%	
Total Food and Alcohol	\$4.3M	26.90%	\$27.0M	27.52%	\$35.0M	27.76%	\$33.7M	27.80%	
Food At Home	\$2.4M	15.29%	\$15.6M	15.96%	\$20.4M	16.15%	\$19.6M	16.16%	
Food Away From Home	\$1.8M	9.71%	\$9.5M	9.74%	\$12.3M	9.76%	\$11.9M	9.80%	
Alcoholic Beverages	\$300.1K	1.90%	\$1.8M	1.85%	\$2.3M	1.85%	\$2.2M	1.85%	
Total Household	\$2.1M	12.98%	\$12.4M	12.70%	\$16.1M	12.73%	\$15.3M	12.61%	
House Maintenance & Repair	\$345.2K	2.18%	\$2.0M	2.68%	\$3.4M	2.72%	\$3.2M	2.67%	
Household Equip & Furnishings	\$896.9K	5.67%	\$5.2M	5.28%	\$6.7M	5.31%	\$6.4M	5.26%	
Household Operations	\$624.4K	3.95%	\$3.7M	3.74%	\$4.7M	3.71%	\$4.5M	3.69%	
Housing Costs	\$184.8K	1.17%	\$981.4K	1.00%	\$1.2M	0.98%	\$1.2M	0.99%	

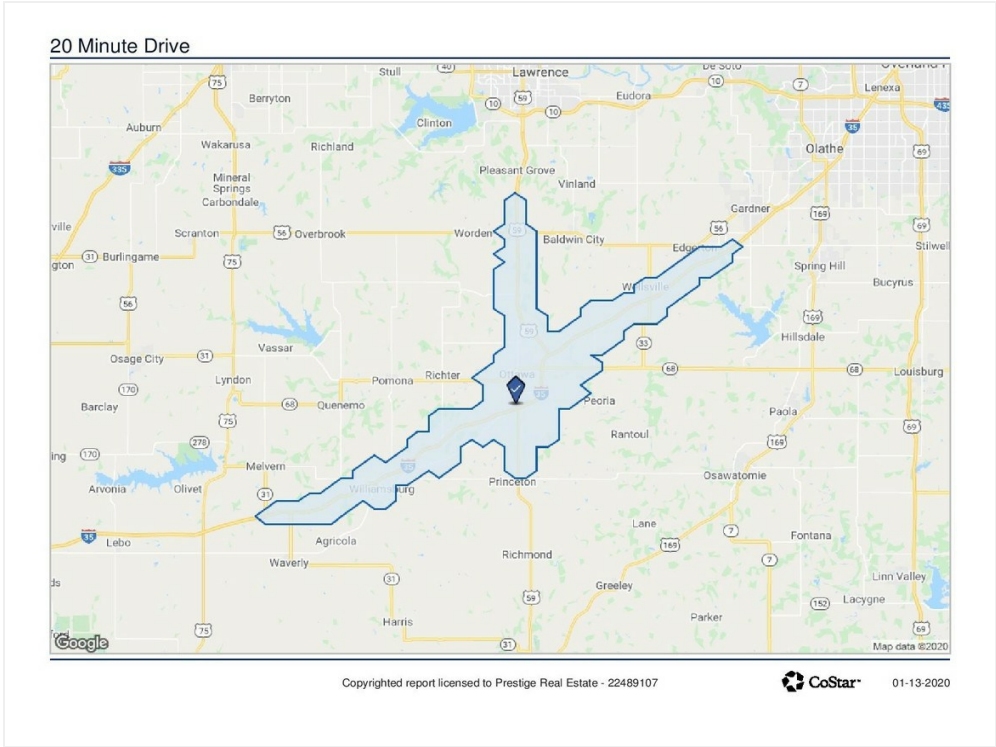
Income & Spending Demographics									
226 W 23rd St									
	1 Mile		3 Miles		5 Miles		10 Min. Drive		
Total Transportation/Maint.	\$4.2M	26.51%	\$26.2M	26.79%	\$33.3M	26.40%	\$32.8M	26.43%	
Vehicle Purchases	\$2.1M	13.23%	\$13.0M	13.23%	\$16.2M	12.82%	\$15.5M	12.76%	
Gasoline	\$1.3M	8.25%	\$6.6M	8.80%	\$11.2M	8.85%	\$10.8M	8.89%	
Vehicle Expenses	\$66.7K	0.42%	\$377.4K	0.39%	\$483.2K	0.38%	\$497.2K	0.41%	
Transportation	\$222.6K	1.41%	\$1.1M	1.17%	\$1.4M	1.14%	\$1.4M	1.16%	
Automotive Repair & Maintenance	\$506.2K	3.20%	\$3.1M	3.20%	\$4.0M	3.19%	\$3.9M	3.20%	
Total Health Care	\$958.1K	6.06%	\$5.9M	6.07%	\$7.7M	6.14%	\$7.4M	6.16%	
Medical Services	\$523.2K	3.31%	\$3.3M	3.35%	\$4.3M	3.38%	\$4.1M	3.40%	
Prescription Drugs	\$350.7K	2.22%	\$2.2M	2.20%	\$2.8M	2.23%	\$2.7M	2.22%	
Medical Supplies	\$84.3K	0.53%	\$508.5K	0.52%	\$660.1K	0.52%	\$637.0K	0.53%	
Total Education/Day Care	\$858.6K	5.43%	\$5.1M	5.17%	\$6.5M	5.13%	\$6.2M	5.13%	
Education	\$552.9K	3.50%	\$3.3M	3.41%	\$4.3M	3.39%	\$4.1M	3.39%	
Fees & Admissions	\$305.7K	1.93%	\$1.7M	1.76%	\$2.2M	1.74%	\$2.1M	1.74%	

Income and Spending Demographics 1 CoStar 1-20

Income and Spending Demographics 2 CoStar 1-20

210 W 23rd St
210 W 23rd St, Ottawa, KS 66067

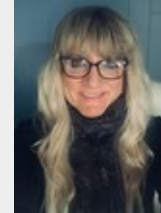
Property Photos



20 Minute Drive Report

210 W 23rd St

210 W 23rd St, Ottawa, KS 66067



Donielle Dodson

donielledodson@gmail.com

(785) 418-6441

Prestige Real Estate

406 S Main St

Ottawa, KS 66067

PRESTIGE
REAL ESTATE